

SOLARWINDS ORION

SolarWinds Orion Management Pack

Version 1.1.1

Introduction.....	1
Requirements.....	2
Upgrading to Version 1.1.1	2
Installing the SolarWinds Orion Management Pack	2
Configuring the SolarWinds Orion Management Pack ...	4
Ensure the Management Pack Is Correctly Installed.....	7
Known Issues.....	7

The SolarWinds Orion Management Pack allows you to view your Orion Network Performance Monitor and Orion NetFlow Traffic Analyzer data within your Microsoft System Center Operations Manager 2007 R2 deployment. This technical reference provides the requirements and the procedures to install and configure your management pack.

Copyright© 1995-2011 SolarWinds. All rights reserved worldwide. No part of this document may be reproduced by any means nor modified, decompiled, disassembled, published or distributed, in whole or in part, or translated to any electronic medium or other means without the written consent of SolarWinds. All right, title and interest in and to the software and documentation are and shall remain the exclusive property of SolarWinds and its licensors. SolarWinds Orion™ and SolarWinds Toolset™ are trademarks of SolarWinds and SolarWinds.net®, thwack®, and the SolarWinds logo are registered trademarks of SolarWinds. All other trademarks contained in this document and in the Software are the property of their respective owners.

SOLARWINDS DISCLAIMS ALL WARRANTIES, CONDITIONS OR OTHER TERMS, EXPRESS OR IMPLIED, STATUTORY OR OTHERWISE, ON SOFTWARE AND DOCUMENTATION FURNISHED HEREUNDER INCLUDING WITHOUT LIMITATION THE WARRANTIES OF DESIGN, MERCHANTABILITY OR FITNESS FOR A PARTICULAR PURPOSE AND NONINFRINGEMENT. IN NO EVENT SHALL SOLARWINDS, ITS SUPPLIERS OR ITS LICENSORS BE LIABLE FOR ANY DAMAGES, WHETHER ARISING IN TORT, CONTRACT OR ANY OTHER LEGAL THEORY EVEN IF SOLARWINDS HAS BEEN ADVISED OF THE POSSIBILITY OF SUCH DAMAGES.

Microsoft® and Windows 2000® are either registered trademarks or trademarks of Microsoft Corporation in the United States and/or other countries.

Graph Layout Toolkit and Graph Editor Toolkit © 1992 - 2001 Tom Sawyer Software, Oakland, California. All Rights Reserved.

Portions Copyright © ComponentOne, LLC 1991-2002. All Rights Reserved.

Document Revised: 11/21/2011 for Version 1.1.1

Introduction

The SolarWinds Orion Management Pack allows you to view summary information about your network devices, provided by your SolarWinds Orion installation, within the Operations Console of your Microsoft System Center Operations Manager 2007 installation. Installing the SolarWinds Orion Management Pack adds the following views to the Operations Console:

- Orion Components View
- Orion Map View
- Orion Reports View
- Network Health
 - Network Interface View
 - Network Nodes View
- Network Performance
 - Interface Performance View
 - Node Performance View
- Network Problems
 - Interfaces with Problems
 - Network Alerts from Orion
 - Network Events
 - Nodes with Problems
- NetFlow Traffic Analysis (if SolarWinds Network Traffic Analyzer is installed as a module on your SolarWinds server)
 - NetFlow Collectors
 - NetFlow Events
 - NetFlow Interface Health
 - NetFlow Interface Performance
 - NetFlow Traffic Analysis Summary

Requirements

Ensure your SolarWinds Orion and Microsoft System Center Operations Manager 2007 deployment meets the following requirements.

Component	Requirement
SolarWinds Orion NPM	Versions 9.5 or later.
Ports between the System Center Operations Manager server and the Orion NPM server	Web interface port. By default, this is TCP port 80. TCP port used by the SolarWinds Information Service: 17777. Note: The Information Service is included with Orion NPM 9.5.
Microsoft System Center version	Microsoft System Center Operations Manager 2007 R2
Operating System	Windows 2008 both 32-bit and 64-bit
Hardware	Hardware requirements are fully covered by the installation requirements of Microsoft System Center Operations Manager 2007 R2 Note: System Center Operations Manager clustering is not supported.
Permissions	RMS requires that System Center Operations Manager datareader, datawrite, and mgmtsvraction accounts have local administrator access. Note: If the System Center Operations Manager and SQL Servers are not on the same physical machine, the System Center Operations Manager Action and System Center Operations Manager SDK accounts require SQL Server permissions.

Upgrading to Version 1.1.1

To upgrade from a previous version, use Add or Remove Programs to remove the previous version, and then install this version. For more information, see "Installing the SolarWinds Orion Management Pack" on page 2.

Installing the SolarWinds Orion Management Pack

The SolarWinds Orion Management Pack must be installed on your Microsoft System Center Operations Manager 2007 R2 server.

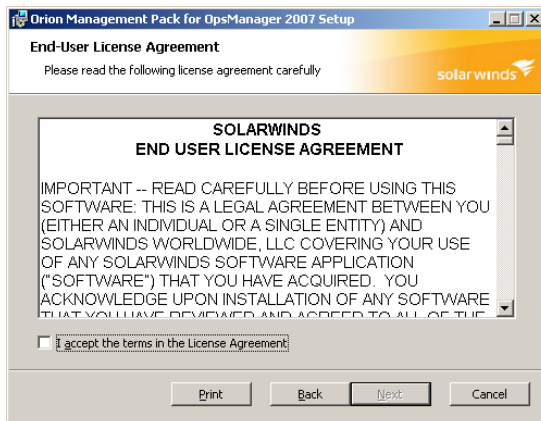
To install the SolarWinds Orion Management Pack:

1. Log on to your Microsoft System Center Operations Manager 2007 server with an administrator account or an account with the appropriate permissions to install management packs.
2. Locate the Orion Management Pack for OpsManager 2007 1.1.1.msi found in the SolarWinds Orion Management Pack download package, and then double-click the file.

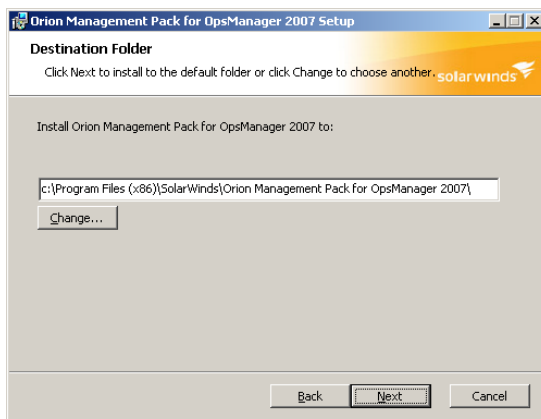
- Review the Welcome window of the Setup Wizard, and then click **Next**.



- Accept the terms in the License Agreement, and then click **Next**.



- Provide an appropriate installation location, and then click **Next**.



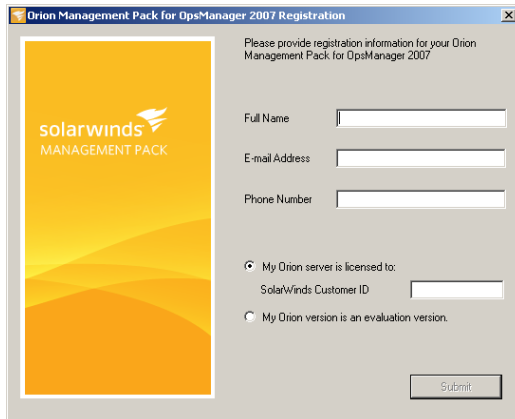
- Click **Install**, and then click **Finish** when the Setup Wizard completes.

Configuring the SolarWinds Orion Management Pack

After the initial install of the SolarWinds Orion Management Pack, the Configuration wizard immediately launches. If you want to reconfigure your management pack at any time, you can do so by launching the wizard from the following location: **Start > All Programs > Orion Management Pack for OpsManager 2007 > Orion Management Pack Configuration**.

To configure the SolarWinds Orion Management Pack:

1. **If this is the first time you have run the Configuration wizard**, provide your **Full Name**, **E-mail Address**, and **Phone Number**.



The screenshot shows a registration dialog box titled "Orion Management Pack for OpsManager 2007 Registration". The dialog has a yellow and orange background with the SolarWinds logo and "MANAGEMENT PACK" text. It contains the following fields and options:

- Full Name: [Text Input Field]
- E-mail Address: [Text Input Field]
- Phone Number: [Text Input Field]
- My Orion server is licensed to: (Selected)
- SolarWinds Customer ID: [Text Input Field]
- My Orion version is an evaluation version:
- Submit: [Submit Button]

2. **If you are installing a licensed version of the SolarWinds Orion Management Pack**, select **My Orion server is licensed to**, provide your **SolarWinds Customer ID**, and then click **Submit**.
3. **If you are installing an evaluation of the SolarWinds Orion Management Pack**, select **My Orion version is an evaluation version**, and then click **Submit**.
4. Review the Welcome window of the Configuration Wizard, and then click **Next**.



5. Provide your SolarWinds Server IP Address or Hostname and the Web Console Port.

Orion Management Pack for OpsManager 2007

MANAGEMENT PACK CONFIGURATION WIZARD

Orion Server Location
Please enter the IP address or domain name of the SolarWinds server and optionally change the Web Console port. The following information is used to connect to your SolarWinds server and to retrieve data from it.

SolarWinds Server IP Address or Hostname: 192.168.74.22

Web Console Port: 80

Orion Server Authentication
Please provide your Orion User ID and Password.

User ID: Admin

Password: [Redacted]

Initial Import of Events and Alerts
How many historical events and alerts do you want to import from Solarwinds?
 Only import events and alerts received in the last 24 hours. Recommended.
 Import all events and alerts. Not recommended for performance reasons if your history contains more than 10000 messages.

< Back Next > Cancel

6. Provide your local Orion User ID and Password.

Orion Management Pack for OpsManager 2007

MANAGEMENT PACK CONFIGURATION WIZARD

Orion Server Location
Please enter the IP address or domain name of the SolarWinds server and optionally change the Web Console port. The following information is used to connect to your SolarWinds server and to retrieve data from it.

SolarWinds Server IP Address or Hostname: 192.168.74.22

Web Console Port: 80

Orion Server Authentication
Please provide your Orion User ID and Password.

User ID: Admin

Password: [Redacted]

Initial Import of Events and Alerts
How many historical events and alerts do you want to import from Solarwinds?
 Only import events and alerts received in the last 24 hours. Recommended.
 Import all events and alerts. Not recommended for performance reasons if your history contains more than 10000 messages.

< Back Next > Cancel

7. Select the events and alerts you want to import, and then click **Next**.

Orion Management Pack for OpsManager 2007

MANAGEMENT PACK CONFIGURATION WIZARD

Orion Server Location
Please enter the IP address or domain name of the SolarWinds server and optionally change the Web Console port. The following information is used to connect to your SolarWinds server and to retrieve data from it.

SolarWinds Server IP Address or Hostname: 192.168.74.22

Web Console Port: 80

Orion Server Authentication
Please provide your Orion User ID and Password.

User ID: Admin

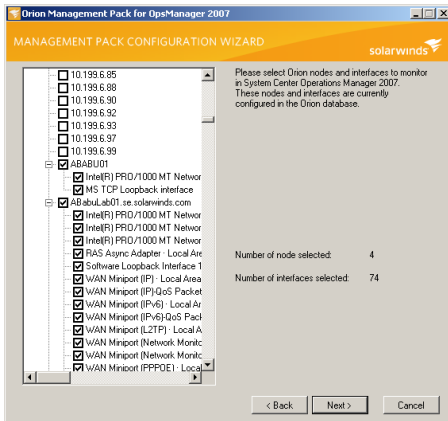
Password: [Redacted]

Initial Import of Events and Alerts
How many historical events and alerts do you want to import from Solarwinds?
 Only import events and alerts received in the last 24 hours. Recommended.
 Import all events and alerts. Not recommended for performance reasons if your history contains more than 10000 messages.

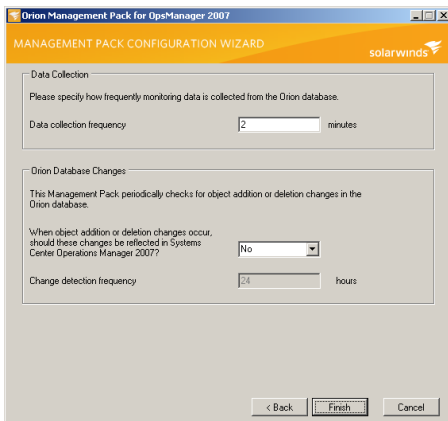
< Back Next > Cancel

6 ▣ SolarWinds Orion Management Pack

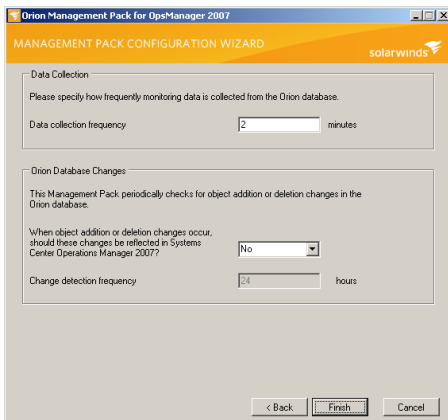
8. Check the nodes and interfaces you want to monitor, and then click **Next**.



9. Provide the frequency with which you want to pull data from your SolarWinds Orion database into the SolarWinds Orion Management Pack in the **Data collection frequency** field.



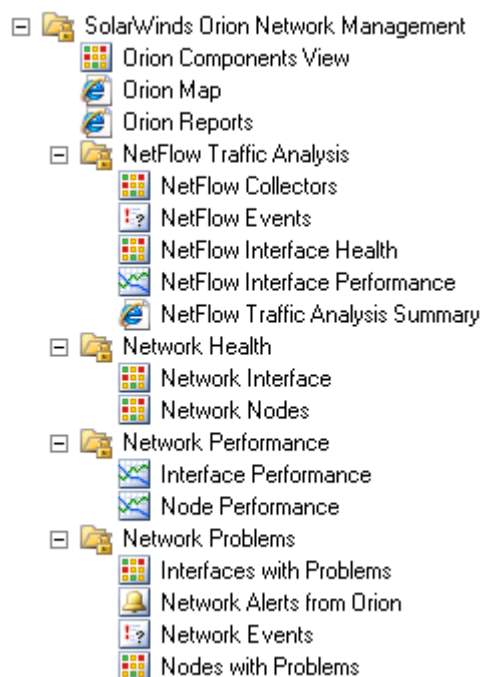
10. *If you want to periodically check for object additions or deletions from your SolarWinds Orion database and update SolarWinds Orion Management Pack accordingly*, select **Yes**, and then indicate how often you want to check for updates in the **Change detection frequency** field.



11. Click **Finish**.

Ensure the Management Pack Is Correctly Installed

The left navigation pane of your Operations Console reflects your installation of the SolarWinds Orion Management Pack. If you have installed both Orion NPM and Orion NetFlow Traffic Analyzer, the navigation pane looks similar to the following image.



If you installed with only Orion NPM support, the navigation pane will not contain the NetFlow-specific views.

Known Issues

The following issues are known to exist in this release and may be addressed in a future release:

- If you are monitoring 2000 or more objects with the SolarWinds Orion Management Pack installed on a virtual machine, it is possible that the MonitoringHost process may fully load your virtual machine CPU, resulting in monitoring delays. For more information about resolving this issue, see the [SolarWinds Knowledge Base article, “Data is delayed or not received at all by SolarWinds Orion Management Pack”](#).
- If you are maintaining your System Center Operations Manager Root Management Server (RMS) and your System Center Operations Manager Database on separate servers, there is a known permissions requirement that may cause Orion nodes to display with a health status of “Warning”. To correct this erroneous condition, confirm that the following System Center Operations Manager service accounts are local administrators on the System Center Operations Manager RMS server:
 - Dataread service account
 - Data Warehouse Write service account
 - Action Account service account
- If chart information is not displayed after adding the NetFlow Table resource or if a “Connection Failed to Orion” error is listed in the Event Viewer, Ensure that the `domain\mgmtsrvaction` service

account was added to the SCOM Application administrators group. Once this account is added and the SCOM services are restarted, data points will be displayed in the graph.

- In certain configurations, the NetFlow Collector may display in "Critical" status, though it is otherwise stable. If you synchronize the clock on your servers, the issue may be avoided.
- Node state information is not displayed in the Network Health view.
- SolarWinds Orion Management Pack does not currently support https.
- SolarWinds Orion Management Pack does not currently support System Center Operations Manager clustering.
- The Network Traffic Analysis Summary view does not display correctly in the SolarWinds Orion Management Pack for SolarWinds Orion Network Traffic Analyzer versions 3.7 and 3.8.